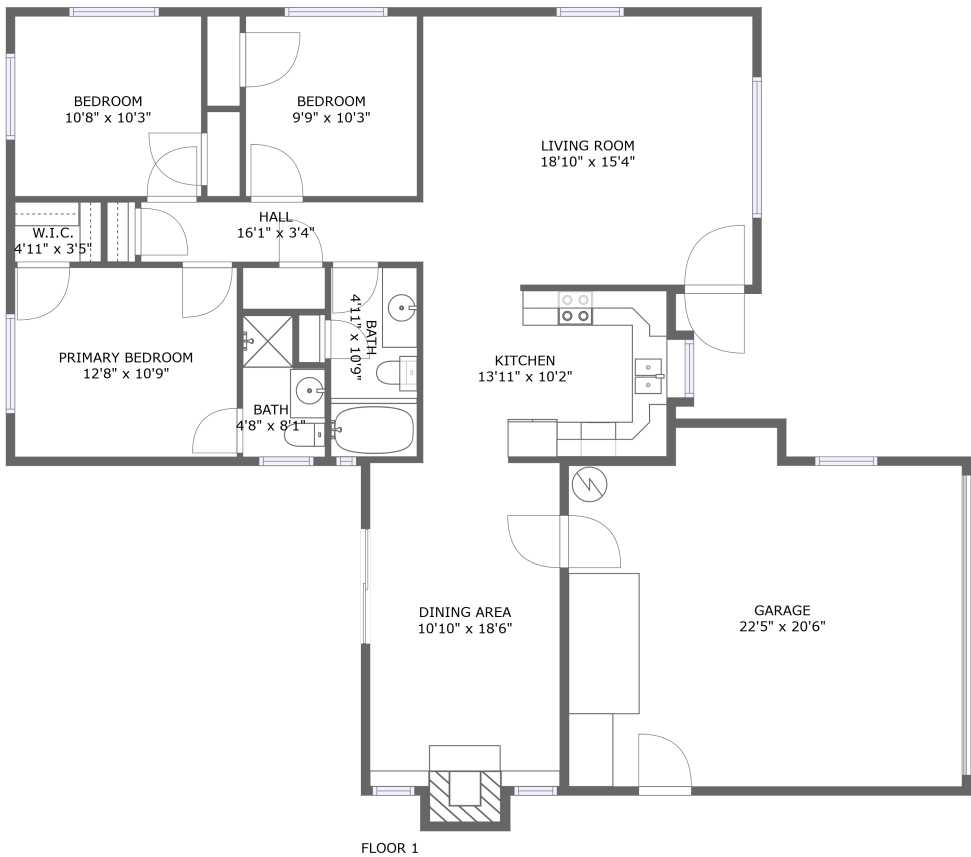


Home report

2100 San Gabriel Street, Fairfield, Solano County, California,
United States, 94533



Total Area: 1215 sq. ft

Floor 1: 1215 sq. ft

Excluded: Garage 423 sq. ft, Embedded window 4 sq. ft, Fireplace 10 sq. ft, Walls: 115 sq. ft

Property summary

1 Floors

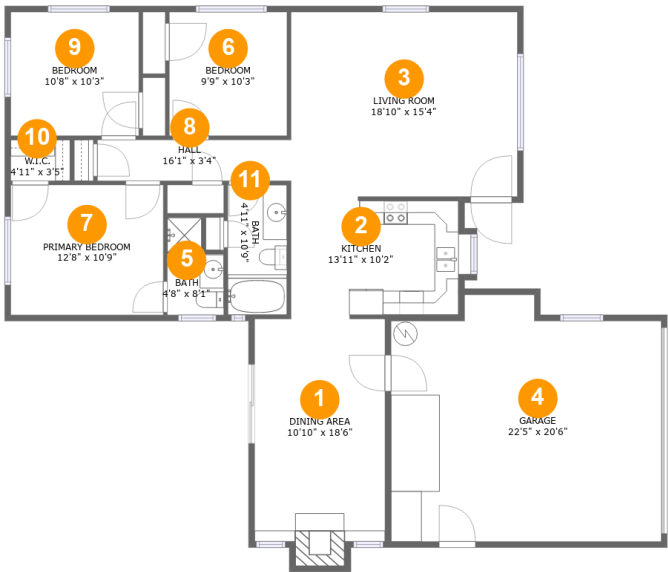
3 Bedrooms

2 Bathrooms

1 Garages

Home report

2100 San Gabriel Street, Fairfield, Solano County, California,
United States, 94533



Room dimensions

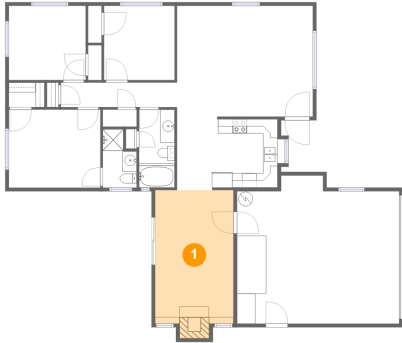
Floor 1 Total:1215sqft Excluded: 437sqft

#		Max Dimensions	sqft	Included
1	Dining Area	10'10" x 18'6"	208 sq. ft	Yes
2	Kitchen	13'11" x 10'2"	135 sq. ft	Yes
3	Living Room	18'10" x 15'4"	288 sq. ft	Yes
4	Garage	22'5" x 20'6"	423 sq. ft	No
5	Bath	4'8" x 8'1"	32 sq. ft	Yes
6	Bedroom	9'9" x 10'3"	100 sq. ft	Yes
7	Primary Bedroom	12'8" x 10'9"	137 sq. ft	Yes
8	Hall	16'1" x 3'4"	55 sq. ft	Yes
9	Bedroom	10'8" x 10'3"	109 sq. ft	Yes
10	W.I.C.	4'11" x 3'5"	17 sq. ft	Yes
11	Bath	4'11" x 10'9"	53 sq. ft	Yes

Home report

2100 San Gabriel Street, Fairfield, Solano County, California,
United States, 94533

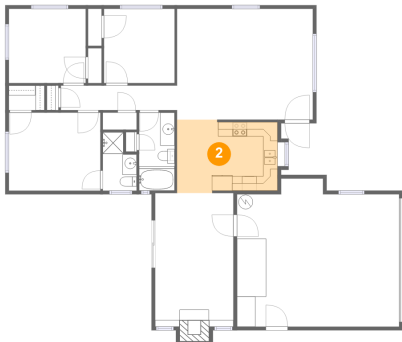
1 Floor 1 - Dining Area



Max Dimensions: 10'10" x
18'6"
Calculated Area: 208 sq. ft
Included: Yes

Heated: Yes
Finished: Yes
Enclosed: Yes
Contiguous:
Yes
Permitted: Yes
Wet space: No
Addition: No
Conversion: No

2 Floor 1 - Kitchen



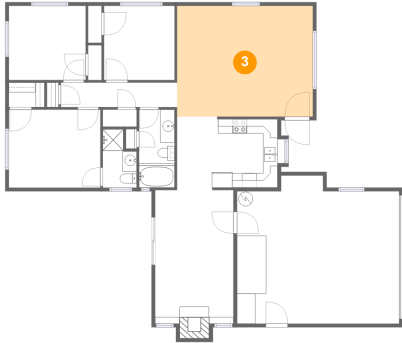
Max Dimensions: 13'11" x
10'2"
Calculated Area: 135 sq. ft
Included: Yes

Heated: Yes
Finished: Yes
Enclosed: Yes
Contiguous:
Yes
Permitted: Yes
Wet space: No
Addition: No
Conversion: No

Home report

2100 San Gabriel Street, Fairfield, Solano County, California,
United States, 94533

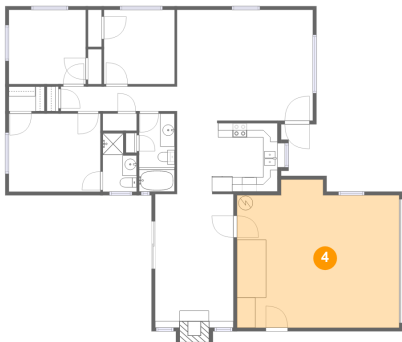
3 Floor 1 - Living Room



Max Dimensions: 18'10" x 15'4"
Calculated Area: 288 sq. ft
Included: Yes

Heated: Yes
Finished: Yes
Enclosed: Yes
Contiguous: Yes
Permitted: Yes
Wet space: No
Addition: No
Conversion: No

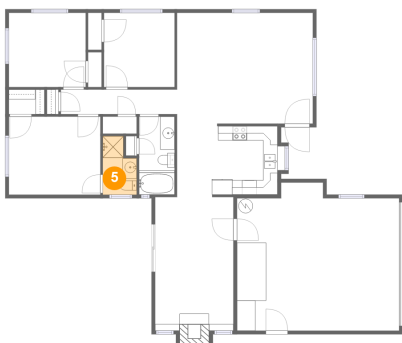
4 Floor 1 - Garage



Max Dimensions: 22'5" x 20'6"
Calculated Area: 423 sq. ft
Included: No

Heated: No
Finished: No
Enclosed: Yes
Contiguous: Yes
Permitted: Yes
Wet space: No
Addition: No
Conversion: No

5 Floor 1 - Bath



Max Dimensions: 4'8" x 8'1"
Calculated Area: 32 sq. ft
Included: Yes

Heated: Yes
Finished: Yes
Enclosed: Yes
Contiguous: Yes
Permitted: Yes
Wet space: Yes
Addition: No
Conversion: No

Home report

2100 San Gabriel Street, Fairfield, Solano County, California,
United States, 94533

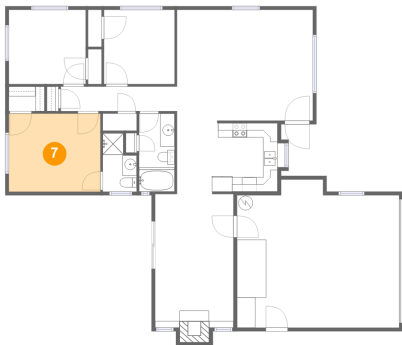
6 Floor 1 - Bedroom



Max Dimensions: 9'9" x 10'3"
Calculated Area: 100 sq. ft
Included: Yes

Heated: Yes
Finished: Yes
Enclosed: Yes
Contiguous: Yes
Permitted: Yes
Wet space: No
Addition: No
Conversion: No

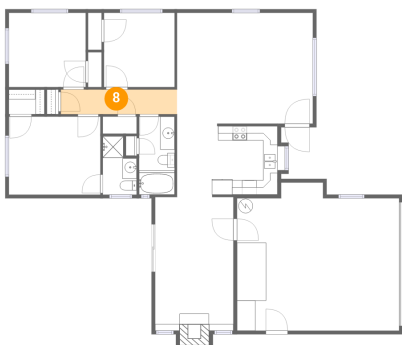
7 Floor 1 - Primary Bedroom



Max Dimensions: 12'8" x 10'9"
Calculated Area: 137 sq. ft
Included: Yes

Heated: Yes
Finished: Yes
Enclosed: Yes
Contiguous: Yes
Permitted: Yes
Wet space: No
Addition: No
Conversion: No

8 Floor 1 - Hall



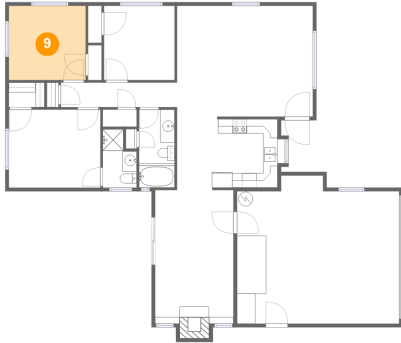
Max Dimensions: 16'1" x 3'4"
Calculated Area: 55 sq. ft
Included: Yes

Heated: Yes
Finished: Yes
Enclosed: Yes
Contiguous: Yes
Permitted: Yes
Wet space: No
Addition: No
Conversion: No

Home report

2100 San Gabriel Street, Fairfield, Solano County, California,
United States, 94533

9 Floor 1 - Bedroom



Max Dimensions: 10'8" x 10'3"
Calculated Area: 109 sq. ft
Included: Yes

Heated: Yes
Finished: Yes
Enclosed: Yes
Contiguous: Yes
Permitted: Yes
Wet space: No
Addition: No
Conversion: No

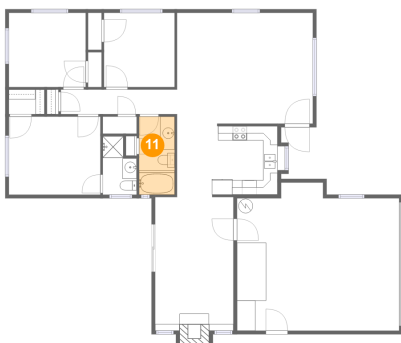
10 Floor 1 - W.I.C.



Max Dimensions: 4'11" x 3'5"
Calculated Area: 17 sq. ft
Included: Yes

Heated: Yes
Finished: Yes
Enclosed: Yes
Contiguous: Yes
Permitted: Yes
Wet space: No
Addition: No
Conversion: No

11 Floor 1 - Bath



Max Dimensions: 4'11" x 10'9"
Calculated Area: 53 sq. ft
Included: Yes

Heated: Yes
Finished: Yes
Enclosed: Yes
Contiguous: Yes
Permitted: Yes
Wet space: Yes
Addition: No
Conversion: No